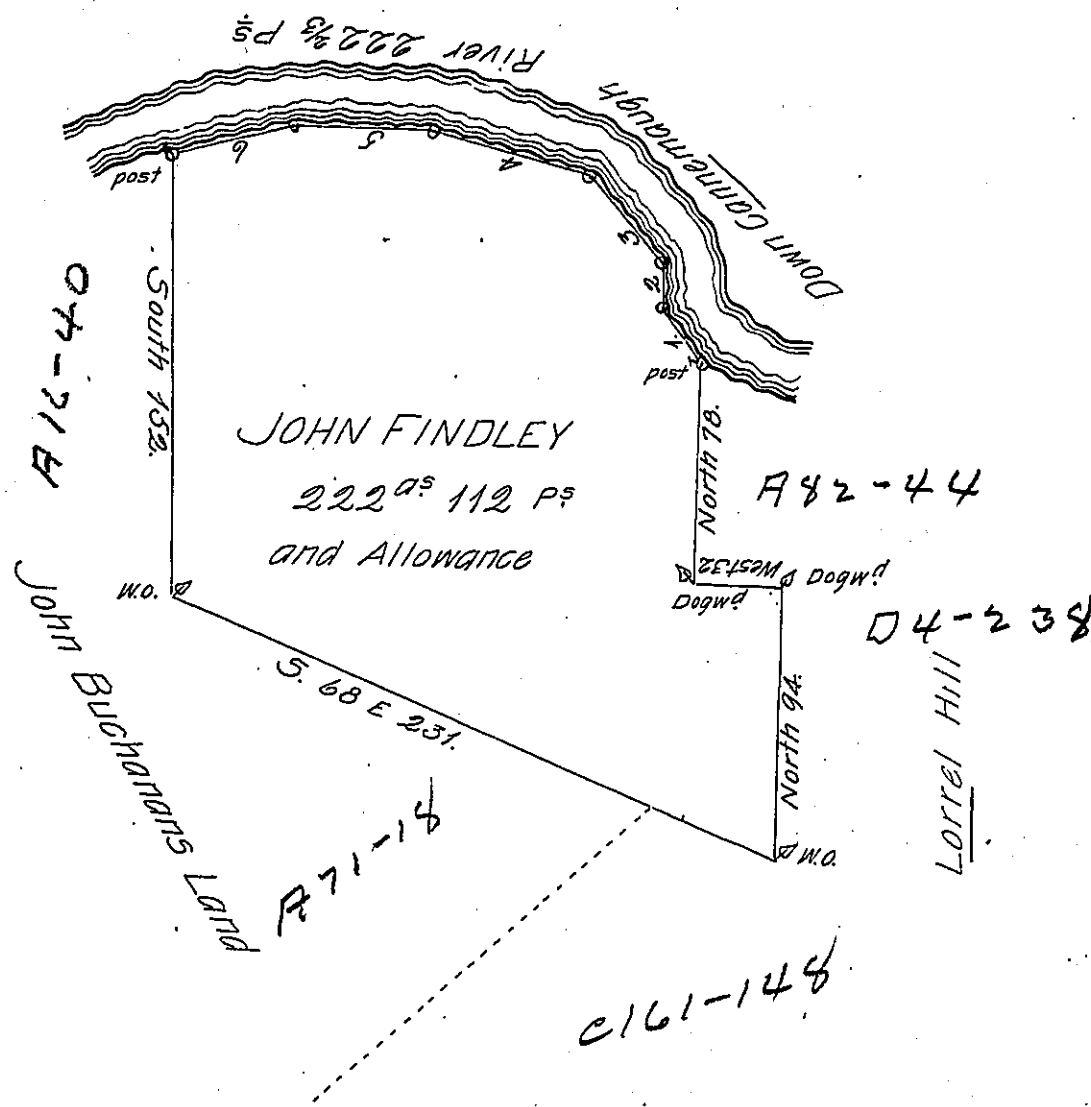


N <sup>o</sup> of courses	Courses down Canemaugh River	distances
1	N38W	20
2	North	17
3	N42W	38
4	N75W	58
5	West	50 $\frac{2}{3}$
6	S76W	39
Total dist.		222 $\frac{2}{3}$



In pursuance of a Warrant dated November 1<sup>st</sup> 1785 was Survey'd for John Findley the above described Tract of Land Containing Two Hundred & Twenty two Acres and 112 perches with an Allowance proportioned to Six P Cent Situate on the South Side of Canemaugh River in Wheatfield Township Westmoreland County Survey'd April 12<sup>th</sup> 1787.

P- John Moore D.S.

To John Lukens Esq. Surv. Gen. }

IN TESTIMONY that the above is a copy of the original remaining on file in the Department of Internal Affairs of Pennsylvania, made conformably to an Act of Assembly approved the 16th day of February, 1833, I have hereunto set my Hand and caused the Seal of said Department to be affixed at Harrisburg, this third day of October 1904.

*George P. Brown*  
 Secretary of Internal Affairs.